



NEWS TIPS



ADVERTISE

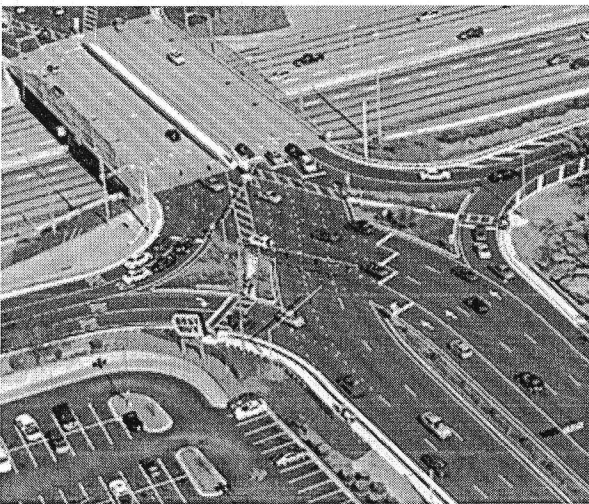


Current Issue

Search

GBJ Staff

## Property owners unite for community wellbeing



Diverging Diamond Interchange/I-85 at Pleasant Hill Rd.




Business and property owners across Gwinnett and N. Fulton understand the value of good investments, especially when it comes to sacrificing hard-earned money for their community's well being. Their voices are unified through community improvement districts (CIDs) – defined areas



where businesses pay additional taxes to fund projects. Learn what your and neighboring business communities have in the works.

## CIDs Operating in Gwinnett and N. Fulton

### Braselton LifePath CID

Spanning portions of Gwinnett, Hall and Barrow counties, along Ga. State Routes 347 and 211, this district administers and funds the

SHARE   

 Email  Print

LifePath. This series of multi-use paths, along and crossing existing roads for urban connectivity, provide alternative access to retail shops, offices and restaurants in the Braselton area along the 1.7 mile, 10-foot wide path. Learn more at [braseltonlifepath.com](http://braseltonlifepath.com).

### **Evermore CID**

Property owners along U.S. Hwy. 78 in Gwinnett tax themselves to make their community “a great place to live, work and shop.” The past year has seen a resurgence of business and merchant activity, turning this major thoroughfare into an upscale destination “rather than a road to somewhere else.” The association develops and aids implementation of a long-term plan for the corridor, coordinates the median installation, investigates services, security and joint marketing efforts for U.S. 78 business owners, and acts as a liaison with community leaders and government officials. Learn more at [evermorecid.org](http://evermorecid.org).

### **Gwinnett Place CID**

With annual retail sales in the billions, the Greater Gwinnett Place area remains the county’s central business district and the community’s strategic heart. The area’s commercial property owners drive this public-private partnership. The district has accomplished a number of key improvement projects already benefiting those working and visiting the area, including: Gwinnett’s first Diverging Diamond Interchange; I-85/Ga. 316 interchange reconstruction; pedestrian safety and mobility enhancements; and widening of all major thoroughfares serving the area. Learn more at [gwinnettplacecid.com](http://gwinnettplacecid.com).

### **Gwinnett Village CID**

The 14-square-mile area spanning the I-85 corridor in southwest

Gwinnett is Georgia's largest CID. Commercial property owners fund this public-private comprised of nearly 600 commercial owners, accounting for more than \$1 billion in commercial property value, including 5,000 businesses and 60,000 workers. The CID is fulfilling a mission to "increase commercial values, promote economic development and enhance quality of life for those that live, work and/or play in The Village." Learn more at [gwinnettville.com](http://gwinnettville.com).

### **Lilburn CID**

Formed by concerned residents, committees and government officials to promote prosperity among families and businesses, this CID zeroes in on the U.S. Route 29 corridor, with the goal of creating a "Boulevard of Opportunity" extending from Ronald Reagan Pkwy. to Harmony Grove Rd. The district's strategy lies in creating and defining a central commercial and economic hub. Improvements include underground utilities, inter-parcel connections, new and connected secondary access roads, streetscape improvements, a median and identifying signage. Learn more at [lilburncid.com](http://lilburncid.com).

### **North Fulton CID**

Formed by a group of business leaders seeking to maintain and enhance the North Fulton Community, this CID partners with the cities of Alpharetta, Milton and Roswell and has a footprint spanning from Mansell Rd. north to McGinnis Ferry Rd. Since its inception, the CID has invested more than \$16 million in the community, leveraging the funding to create nearly \$81 million in new infrastructure benefiting nearly 400 property owners along the Ga. State Route 400 corridor, impacting more than 77,000 employees represented by the district. Learn more at [northfultoncid.com](http://northfultoncid.com).

### **Perimeter CIDs**

Through a partnership with the cities of Sandy Springs, Dunwoody and Brookhaven, the Perimeter CIDs use tax dollars to “help accelerate needed transportation and infrastructure improvement projects...with land use and zoning strategies that will enhance mobility and improve access” for the areas served (which account for 29 million-square-feet of office space and 5,000 companies). The Perimeter CIDs have added more than \$145 million in transportation infrastructure improvements to the area. Learn more at [perimetercid.org](http://perimetercid.org).

This entry was posted in Featured, Real Estate. Bookmark the permalink.