

47° F
Hi:64 LO:44

SuwaneePatch



Like 338

[Patch Newsletter](#)

[Nearby](#)

[Join](#)

[Sign In](#)



Editor [Steve Burns](#): Heard some news you want us to check out? Let me know. steve.burns@patch.com

[Home](#)

[News](#)

[Events](#)

[Places](#)

[House & Home](#)

[Traffic](#)

[Gallery](#)

[More](#)

[Search](#)



[Government](#)

Gwinnett Seeking Public Input on Improving I-85

Sessions will be held in Norcross and Duluth on improving traffic flow.

February 2, 2012

[Recommend](#)

[Tweet](#) 2

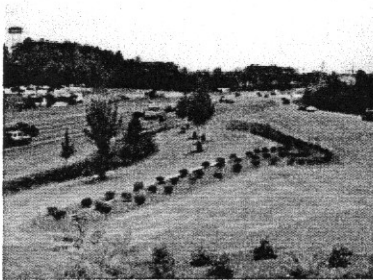
[Email](#)

[Print](#)

[1 Comment](#)

Related Topics: [I-85](#), [Suwanee](#), and [gwinnett](#)

What do you think the county should do about I-85? [Tell us in the comments.](#)



Gwinnett County government and business leaders are offering the public the chance to learn about and comment on efforts to improve traffic flow on I-85.

Sessions on the I-85 Transit Study will be held:

- Monday, Feb. 6 at the Gwinnett Village CID office, 5855 Jimmy Carter Boulevard, Suite 122, in Norcross
- Thursday, Feb. 9, Gwinnett Place Marriott, 1775 Pleasant Hill Road in Duluth.

Both sessions will be 5-7 p.m.

"I encourage everyone to be informed and engaged throughout this process," said Gwinnett Commission Chairman Charlotte Nash in a news release. "With 467,000 commuters passing through the I-85 corridor daily, it is important that we study ways to help movement in the corridor. Of course, we want to hear the thoughts and opinions of residents and businesses."

Gwinnett County, in collaboration with Gwinnett Place and Gwinnett Village Community Improvement Districts and the Federal Transit Administration, is undertaking the study to analyze I-85 corridor traffic in the county.

The study will take a look at traffic congestion, economic development and demographic information within the Gwinnett County portion of the I-85 corridor and consider a variety of routes and transit options, according to the news release.

"Mobility is important to Gwinnett's businesses and residents and the economic development of our community," said Chuck Warbington, Gwinnett Village CID Executive Director. "We are excited to partner in a study that will provide solutions for our future."

For more information on the study, visit www.gwinnettcounty.com.

Email me updates about this story.

Enter your email address

Keep me posted

[Recommend](#)

[Tweet](#) 2

[Email](#)

[Print](#)

[Close](#)