

From: news@gwinnettforum.com
Sent: Friday, November 16, 2012 7:46 AM
To: jallen@gwinnettplaceid.com
Subject: 11/16: Vegas trip; Hope Clinic; more

If you have trouble viewing today's issue, please go to: <http://www.GwinnettForum.com>.

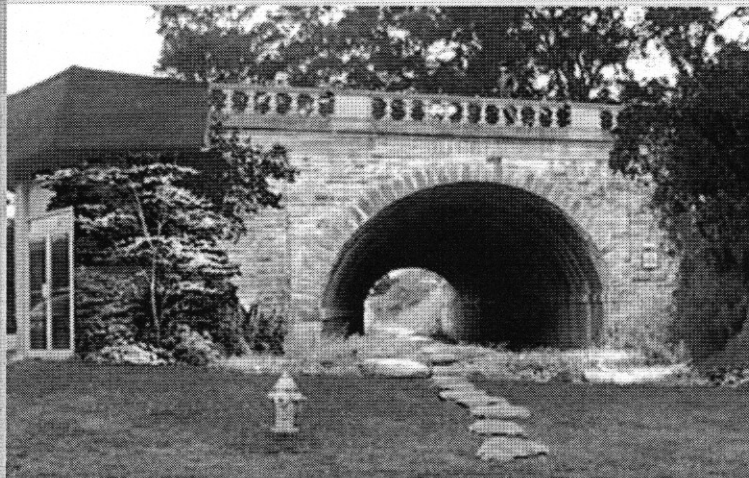


Insert your en

[guest commentary](#) | [elliott brack](#) | [feedback](#) | [archive](#) | [about](#) | [our underwriters](#) | [home](#)

BEFORE AND AFTER:

Lilburn's City Council has commissioned a \$10,000 mural on the former Cofer Electric building in downtown Lilburn. Work on the Cofer Building mural could begin as early as January, local artist Sonny Franks says. A full-sized rendering of the mural will be projected onto the building during the Lilburn Christmas Parade on December 1. Franks is part of a group of artists that travel the country painting murals. "This is really the beginning of something a lot bigger." Franks and Mayor Johnny Crist are working to form an art association in Lilburn that will commission works of public art, support local artists of all kinds, and create studio space in Old Town.



Cost of the mural is funded through the city's Public Art Fund. Businesses constructing a building valued at more than \$750,000 contribute to the fund in lieu of placing a work of art in their commercial development. Those interested in participating in a city art association may contact Sonny Franks at 770-923-9933.

Issue 12.61
Friday, Nov. 16, 2012

TODAY'S FOCUS

:: [Visit to neon glory of Vegas](#)

ELLIOTT BRACK'S PERSPECTIVE

:: [Hope Clinic needs volunteers](#)

FEEDBACK

:: [Gwinnett as Ohio of Georgia?](#)

UPCOMING

:: [More shade in Suwanee, CID](#)

NOTABLE

:: [Ricoh addition, more](#)

ALSO INSIDE

IN THE SPOTLIGHT

:: [Heaven & Associates, P.C.](#)

GEORGIA TIDBIT

:: [On Harry James](#)

LAGNIAPPE

:: [More Las Vegas neon](#)

GWINNETT CALENDAR

:: [Lots of events on tap](#)

TODAY'S QUOTE

:: [What FDR says about leaders](#)

Heaven & Associates, P.C.

The public spiritedness of our sponsors allows us to bring GwinnettForum.com to you at no cost to readers. **Heaven & Associates, P.C.**, is a certified public accounting firm, dedicated to being your partner in navigating a changing world. They are located at 4720 Peachtree Industrial Boulevard, Suite 201, Norcross, Georgia. The firm offers cloud services for accounting and payroll. They work with clients to minimize their tax obligations, address the financial and accounting needs of their businesses and address the broader accounting needs of estate planning, business succession planning, and benefit and retirement planning. They can be reached at 770-849-0078. Their web site is www.heavencpa.com.



- For a list of other underwriters of this forum, [click here](#).

FEEDBACK

Brings question: Is Gwinnett becoming the Ohio of Georgia?

Editor, the Forum:

A recent bit in *GwinnettForum* said that the Gwinnett voting patterns are getting to be more like the overall patterns of the State of Georgia.

New slogan? "Gwinnett County: The Ohio of Georgia?" Interesting analysis.

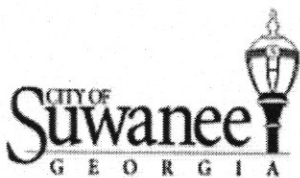
-- Brian James, Peachtree Corners

- **Send us your opinions.** We welcome your letters and thoughts. Our policy: We encourage readers to submit feedback (or letters to the editor). Send your thoughts to the editor at elliott@brack.net. We will edit for length and clarity. Make sure to include your name and the city where you live. Submission of a comment grants permission for us to reprint. Please keep your comments to 300 words or less. However, we will consider longer articles (no more than 500 words) for featuring in Today's Focus as space allows.

UPCOMING

Watch out! More shade coming to the City of Suwanee parks

More shade is coming to City of Suwanee parks. The City is currently installing shade structures at the Sims Lake Park playground and plans to install additional shade sails around the Big Splash fountain area at Town Center Park early next year.



The playground at Sims Lake Park, located at 4600 Suwanee Dam Road, has been closed so that the shade structures, which include metal poles and a polytex fabric in sail shapes, may be installed. (Only the playground has been closed; the rest of Sims Lake Park remains open.) The project will take about two weeks, with the specific completion date depending on weather conditions. In the meantime, children looking for a fun place to play can check out PlayTown Suwanee, the community-built super

playground on Main Street.

The shade fabric at Sims Lake Park is forest green. These shade structures were purchased from Ocala, Florida-based Shade Systems, Inc., and are being installed by 5 Guys Contracting of Lawrenceville. The City has budgeted about \$44,500 for shade at Sims Lake Park.

Deas Construction of Suwanee will provide the shade structures for Town Center Park at an anticipated cost of about \$55,500. The shade fabric, in aqua marine blue, will be installed over some of the benches surrounding the interactive fountain.

Gwinnett Place CID adds two new directors to its board

Two new members were elected Wednesday to serve on the Board of Directors of the Gwinnett Place Community Improvement District.

(NEW) **Groundb**
Senior Center:
Drive, Lawrenc
822 7180.

Wink Art Exhil
Artist Colony in
with a hint of hu
twist to make y
visit www.Tann

Photo Exhibit:
Park Communi
Community Ce
Saturday. Fran
Land," while W
Sea," coastline
photographs fr

Stitched Art S
30, Chocolate I

MORE EEB PERS

11/13: [Casino](#)
11/9: [GOP anc](#)
11/6: [Early vo](#)
11/2: [Will San](#)

10/30: [Georgi](#)
10/26: [Barge](#)
10/23: [Our 20](#)
10/19: [Pet pee](#)
10/15: [Long p](#)
10/12: [NO on](#)
10/9: [Elisha W](#)
10/5: [Lots of c](#)
10/2: [Texting](#)

9/28: [WSB set](#)
9/25: [State Ar](#)
9/21: [Charter](#)
9/18: [Benefits](#)
9/14: [Continui](#)
9/11: [Trip to F](#)
9/7: [Communi](#)

8/31: [Convers](#)
8/24: [More rol](#)
8/21: [Newspa](#)
8/17: [Seem e](#)
8/14: [Western](#)
8/10: [Runoff e](#)
8/7: [New UGA](#)
8/3: [Primaries](#)

- [EEB](#)

FOCUS ARCHIV

Debra Irving, of Snellville, serves as Property Manager of Gwinnett Place Mall for McKinley, Inc. She previously served for 18 years in commercial property management for Connolly Realty Services, Inc. She is a graduate of Jacksonville State University.



Irving



Kaufman

Craig Kaufman has 25 years of experience in real estate/development and management. He is the founder of Kaufman Realty Group. Prior to forming Kaufman, he worked as a financial analyst and real estate consultant in New York City and St. Louis. He serves on the Executive Committee and Board of Directors for Camp Sunshine, a non-profit organizations that holds year-round programs and summer camps for children with cancer. He also serves on the Board of the Jewish Education Loan Fund and on the regional Board of the Anti-Defamation League.

Gwinnett Place CID increases public safety for holidays

The Gwinnett Place Community Improvement District (CID) is again increasing the public safety presence throughout greater Gwinnett Place in time for the holiday shopping season. Extra private security professionals contracted by the CID will expand upon the current seven-day patrols. The added measures will continue for a six-week period accounting for the balance of 2012.

Uniformed professional public safety personnel from Specialized Intelligence and Security Inc. will monitor retail centers, high-traffic areas and other Gwinnett Place area businesses, according to CID Executive Director Joe Allen.

The public safety officers operate in close cooperation with Gwinnett County Police to notify law enforcement of any potential criminal activity. Officers will use vehicles bearing CID markings.

Enhanced security efforts made by the Gwinnett Place CID continue to yield results. Crime continues to decline in the area, with robbery down 57 percent, commercial burglary down 27 percent, thefts down 35 percent, and motor vehicle theft down 35 percent. Total crime has been reduced by 34 percent over the last five years.

NOTABLE

Ricoh Electronics making another expansion in Lawrenceville

Ricoh Electronics, Inc., one of the largest North American producers of high-quality thermal papers and thermal labels, is creating 58 jobs in a 35,500-square-foot expansion of its thermal media coating facility in Lawrenceville.

RICOH Jeff Briwick, president of Ricoh Electronics, says: "This expansion of our thermal media operations enhances our capability to meet our customers' increasing demands and expectations for high-quality products and affirms our commitment to investing for the future. We look for this facility to play a key role in meeting the needs of the North American market and expanding into new markets."

The Lawrenceville facility opened in 1990, and has expanded several times on its 69.5 acre campus. The current expansion will house a cutting-edge thermal media coater that will produce paper to be converted into tags and labels used in a variety of industries including transportation, retail, industrial and medical.

Quick Start will be designing, developing and delivering job-specific training for the new employees in the plant's advanced manufacturing processes, as well as safety, quality and leadership. Leaders from Ricoh, Quick Start and Gwinnett Tech will sign the training agreement on Fri., November 16 at 2 p.m., at Ricoh's Lawrenceville facility.

The training program involves three distinct partners: Ricoh, Gwinnett Technical College and Quick Start. Each partner will be responsible for the successful completion of this program. The partnership will not end when the Quick Start training is completed. Gwinnett Technical College will be available to assist Ricoh Electronics with ongoing training programs.

State recreation group recognized two from Gwinnett

11/13: Barksd
11/9: Houston
11/6: Stilo: C/
11/2: Crews: '

10/30: Willis:
10/26: Brown:
10/19: Hudge
10/15: Urrutia
10/12: Young:
10/9: Long: F
10/5: Jones: F
10/2: DeWilde

9/28: Stilo: Pi
9/21: Love: M
9/21: Walsh: C
9/18: Ashley p
9/14: Wiener:
9/11: Olson: \$
9/7: Stilo: Act

8/31: Havenge
8/24: Griswold
8/21: Brooks:
8/17: Summer
8/14: Sharp: I
8/10: Thomas:
8/7: Carraway
8/3: Willis: Re

• COMI

CONTINUING OI

Gwinnett Forum p
Gwinnett County i
objectives for imp

- Develop offices
- Transpa Gwinnett
- Moving s runoffs
- Light ra station t
- Extensi Arena ar
- Banning
- Making E age trav
- Approva
- More div appointr
- Physica Church i
- Creative
- Advance historic
- Stronge with alcc