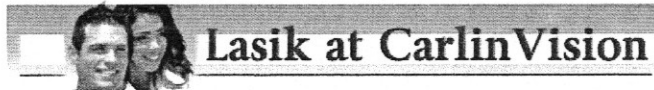


East Mountain Insurors
Business and personal insurance;
independent agent

Georgia Basketball Academy
Personalized basketball training
for college, middle and high
school boys and girls

E-Verify Gwinnett
As low as \$5.95, no setup fee and
no monthly fee. 'No headaches'
compliance with GA's HB-87



GPCID Welcomes RockTenn To Greater Gwinnett Place

Submitted by Admin

The Gwinnett Place Community Improvement District (CID) today welcomed RockTenn and its plans to expand operations into the greater Gwinnett Place area. RockTenn will add 500 new jobs and invest \$5 million by expanding its corporate headquarters to Shackelford Road near Gwinnett Place.

Joe Allen, executive director of the Gwinnett Place CID, said RockTenn's announcement speaks to the continued economic strength of Gwinnett County's central business district.

"We are pleased that RockTenn has selected Gwinnett Place as its ideal destination," Allen said. "Our area is a prime location for regional, nation and international corporate headquarters as well as independent businesses. The CID is eager to work with all businesses seeking success at Gwinnett Place."

The CID cooperates strongly with the Gwinnett Chamber of Commerce and the Partnership Gwinnett economic development initiative to attract and retain employers.

CID leaders also actively engage local and regional economic development authorities, local Chambers of Commerce and real estate brokers / dealers to expand business offerings throughout greater Gwinnett Place.

RockTenn is a national leader in producing corrugated and consumer packaging items as well as recycling solutions. The Norcross-based company now has operations in Lithia Springs, Columbus, Hartwell, Covington, Atlanta, Augusta, College Park, Lithonia and Marietta.

Add comment

IMPORTANT! Comments by unregistered users and members not signed in are reviewed before publication. Guest comments are subject to deletion at the sole discretion of the Admin staff. Site membership provides extra privileges including unmoderated commenting, editing comments, commenting and voting on other comments, unlimited comment length and more. Register or sign in now!

Name (required)

E-mail (required, but will not display)



1000 symbols left

John

Refresh

Send

Main Menu

- Front Page
- Forums
- Your News
- How To...
- Contacts
- Subscribe
- Register/Login
- Advertise Here!

What We Are Reading

- AT&T Joins the Throtting Party, Plans to Slow Down...
- What You Need to Know About the internet Snooping...
- 'Big fish' in La Familia cartel case pleads guilty...
- HOWARD HOSTS SERIES OF CONSTITUENT MEETINGS
- Transportation Expert Almost Gets It
- EXCLUSIVE ART EXHIBIT AT GEORGE PIERCE PARK COMMUNITY...
- I-85 CORRIDOR STUDY GETS UNDERWAY
- Gwinnett, State Unemployment Rates Rise - Patch.com

View all »

Member Login

Registration is required to access premium features

Username

Remember me

Login

Forgot login?

Register

Register to post in the forum and comment on articles

Search the Archives

Search

Bob Griggs

- How Does Deportation Work?
The Center for Immigration Studies recently released a report on the problems



Your Customers Want You To Verify.

Newest Forum Topics

- Read the S&P Report on the U.S. Credit Rating
- National Night Out Against Crime
- Re:The Whitley report on GCPS land deals is now available
- Re:Obama's Great Reelection Myth - Immigration Enforcement is Up
- We can solve the nuclear energy/power issue NOW.

Article Comments

- Dude "Woodsmen" you need to lay off the caffeine. ...
By Lordamoeba
- We protect --NATIVE-- wild animals, not invasive d...
By Melissa Smith
- Don't go making your piece-of-sh** INVASIVE-SPECIE...
By Woodsman
- Cats are an invasive species. Bred by man for man'...
By Woodsman
- Here's another Fun-Fact that trap-advocates fail t...
By Woodsman

Get Our Newsletter!

Subscribe to *The Gwinnett Gazette* to receive our top stories in your Inbox

Subscribe

or Click Here to Receive our Home Page Articles by Email

We're on Twitter!

@SenMikeLee tells @FoxNews that Sens who voted against debt agreemnt will not be considered by leadership for bi-part. debt committee.

Saturday, 06 August 2011