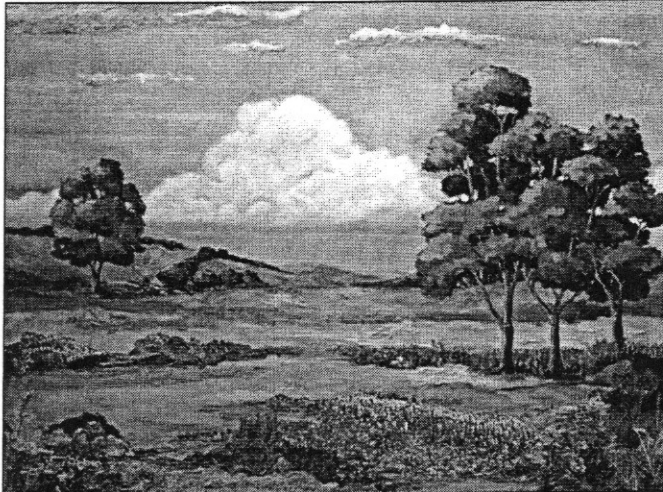


Subscribe



**COLLABORATION:** This painting, "Nature's Symphony," a collaboration from three award-winning artists, will be awarded to one attendee of the Kudzu Art Zone exhibit, which ends on August 27. The show, "Three Women, Three Friends, Three Artists: A Kaleidoscopic Approach," is to open with a summer-themed reception on August 6 in Norcross from 7-9 p.m. Three Kudzu members, Kathy Kitz of Norcross, Anne Labaire of Duluth and Gwen McDonald of Lilburn, have come together in celebration of friendship and creativity to produce this three-woman show. The winner of the collaborative painting will be announced at the end of the exhibit. Regular exhibit hours are Fridays and Saturdays from 11 a.m. until 4 p.m. The Kudzu Center is located at 116 Carlyle Street in Norcross.

Issue 11.35 | Friday, July 29, 2011

**TODAY'S FOCUS**  
:: [Snellville group marks first year](#)

**ELLIOTT BRACK'S PERSPECTIVE**  
:: [Many will buy Peach Pass to be faster](#)

**McLEMORE'S WORLD**  
:: [Debt ceiling](#)

**FEEDBACK**  
:: [Incident on train, Ptree update, media](#)

**UPCOMING**  
:: [Alternates under study, more](#)

**NOTABLE**  
:: [National citation, promotion, grants](#)

**ALSO INSIDE**

**IN THE SPOTLIGHT**  
:: [EMC Security](#)

**RECOMMENDED**  
:: [Harry Potter and the Deathly Hallows](#)

**GEORGIA TIDBIT**  
:: [William Schley busy as governor](#)

**TODAY'S QUOTE**  
:: [On modern-day thought](#)

**LAGNIAPPE**  
:: [Hi-Hope check presentation](#)

OUR SPONSORS



ABOUT US

GwinnettForum.com is a twice-weekly online community commentary for exploring pragmatic and sensible social, political and economic approaches to improve life in Gwinnett County, Ga. USA.

:: [Contact us today](#)  
:: [Subscribe for free](#)  
:: [GeorgiaClips.com](#)

**TODAY'S FOCUS**

**Snellville Trade and Tourism looks back on first year**

By DON BRITT  
President, Snellville Tourism and Trade Association  
Special to GwinnettForum

SNELLVILLE, Ga. July 29, 2011 – It's hard to believe that Snellville Tourism and Trade Association (STAT) is one year old. Building on the success of starting the Snellville Farmer's Market, over the last year we have focused on putting on events designed to make city residents proud of their hometown. Last year's Fall Festival, Christmas Tree Lighting, the large crowd at Star Spangled Snellville and last weekend's Popcorn in the Park movie night are examples of recent activities.



We will continue to produce top-class events in Snellville as the year continues, including the upcoming Fall Festival. We are grateful for the support of our members and sponsors, which allows us to make these events happen.

As we get ready to begin our second year, we will be placing a larger emphasis on the second part of our mission, that of promoting Snellville businesses. We have taken the first step by establishing a tighter relationship with the Snellville Commerce Club.

The Commerce Club has been meeting regularly since 1984. With the purpose of establishing and promoting programs that strengthen ties between members, businesses and the community, the Commerce Club holds monthly meetings featuring networking and a guest speaker. The Commerce Club supports local charities, and provides two \$1,000 scholarships each year to students from Brookwood and South Gwinnett High Schools. You can learn more about the Commerce Club at their Web site, [www.SnellvilleCommerceClub.org](http://www.SnellvilleCommerceClub.org).

As we considered how the Commerce Club and STAT could work together, we realized that it didn't make sense to have separate memberships in Commerce Club and STAT. In fact, some STAT members also are members of the Commerce Club. We decided that it made the most sense to transition STAT memberships to Commerce Club memberships, since the Commerce Club will be the part of Snellville Tourism and Trade that represents and promotes the city's businesses.

What will that mean going forward? Every Commerce Club member will now enjoy the membership benefits of STAT members and vice-versa. For the \$150 annual Business Level membership, this includes:

- Free admission to the monthly lunch meetings of the Commerce Club;
- Listing in the Commerce Club Membership Directory;
- Discounts for advertising in our Snellville Spirit quarterly magazine;

**TODAY'S QUOTE**

**What would happen if economists were laid end-to-end**

"If all economists were laid end to end, they would not reach a conclusion"

– Irish dramatist, literary critic, and a leading figure in the 20th century theater  
George Bernard Shaw (1856-1950).

**SEARCH GWINNETT FORUM**

Search

**GWINNETT CALENDAR**

(NEW) **The Duluth Fall Festival Committee** will host the Duluth Merchants Association: 6 p.m., **Aug. 2**, at the Duluth Festival Center on the Town Green in Downtown Duluth. This is an annual event leading up to the Festival, which is Sept. 24-25. Everyone is invited! Festival volunteers, Costco and Duluth Fine Wines work together to assure that the food and drink will be spectacular. Many DMA members are DFF sponsors and this is to thank them for their participation. (Both groups have a common purpose – to make Duluth a better place to live, work and play!) More info: [www.duluthfallfestival.org](http://www.duluthfallfestival.org).  
(Pd. Adv.)

**Splash and Bash:** 1 p.m., **July 30**, Rhodes Jordan Park Pool. Enjoy wacky games, prizes and cool treats. Regular admission fees apply.

**National Night Out in Lilburn:** 6 p.m. to 8:30 p.m., **Aug. 2**, in the City Park Pavilion. This safety event is sponsored by Safety Smart Lilburn Inc. and the City of Lilburn, aimed at all residents of the 30047 Zip Code.

**Duluth Open House** for traffic improvement: 6 p.m., **Aug. 4**, at Duluth City Hall. Subject of the Open House will be the McClure Bridge Road improvements and the

