

58° F
HI:73 LO:56

DuluthPatch



Editor **Faye Edmondson**: Heard some news you want us to check out? Let me know.
Faye.Edmondson@patch.com

Like **318** Follow

Patch Newsletter Nearby Sign Up

SMALL BUSINESS SATURDAY
NOV 25

Shop small on Nov 26

04:15:14:13

[Home](#)

[News](#)

[Events](#)

[Places](#)

[House & Home](#)

[More](#)

Search

[Business, Holiday Guide 2011](#)

Gwinnett Place CID Increasing Security Patrols

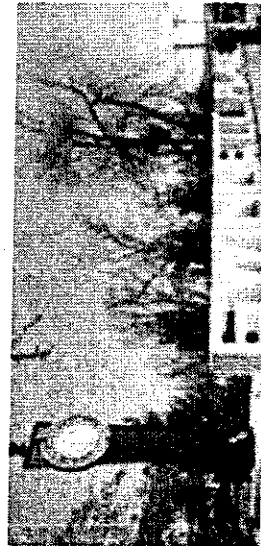
Private security forces hired by GPCID will expand patrols during holiday shopping season.
November 18, 2011

Recommend **4**

[Email](#)

[Print](#)

[Comment](#)



CI

The Gwinnett Place Community Improvement District (CID) is increasing safety patrols around [Gwinnett Place Mall](#) and throughout the greater Gwinnett Place area during the busy holiday shopping season.

Extra private security forces contracted by the GPCID will expand upon the current seven-day patrols, Gwinnett Place CID Executive Director Joe announced. Additional security measures will continue for a six-week period through the end of 2011. Uniformed professional public safety personnel, Specialized Intelligence and Security Inc. will monitor retail centers, high-traffic areas and other Gwinnett Place businesses, he said.

"We want shoppers and visitors to freely enjoy all that Gwinnett Place has to offer at the holidays," Allen said. "We have received much positive feedback from residents and businesses with the added security presence in the past. We are continuing these efforts to ensure that Gwinnett Place is fun, exciting and safe destination for everyone this season."

The private security officers operate in close cooperation with Gwinnett Police and notify them of any potential criminal activity, Allen said. Officers by GPCID will use vehicles bearing CID markings while in the area.

GPCID's community patrols are yielding results, Allen reported. A recently released Gwinnett Police compilation of Gwinnett Place statistics shows a number of incidents continues to drop by double digits in year-to-year comparisons:

- Assaults – down 42%
- Burglary (Commercial) – down 48%
- Theft – down 24%
- Motor Vehicle Theft – down 38%
- Total for all categories of activity – down 26%

Related Topics: [Gwinnett Place CID](#), [Gwinnett Place Mall](#), and [Holiday Security Patrols](#)

Email me updates about this story.

Keep me posted

Recommend:

4

[Email](#)

[Print](#)

Get Patched In

Duluth news, events, and deals, delivered straight to you.

[Sign Up](#)

[CI](#)

[Terms of Service](#) [Privacy Policy](#)