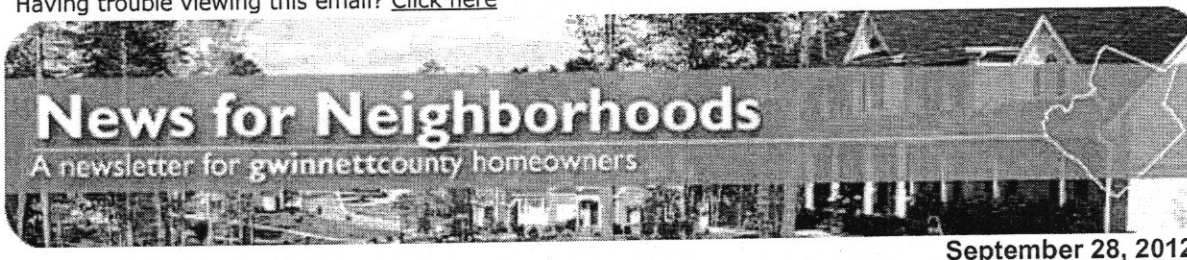


From: Gwinnett County Communications [gccountmunications@gwinnettcountry.com]
Sent: Friday, September 28, 2012 5:30 PM
To: dave@gwinnettplaceid.com
Subject: News for Neighborhoods: A newsletter for Gwinnett County homeowners

Having trouble viewing this email? [Click here](#)



Other newsletters:

- [GC Connection](#)
- [Gwinnett LIFE](#)
- [OneStop](#)
- [Tax & Tag News](#)
- [Waterwords](#)

Dear Homeowner:

As a resident of Gwinnett County, you know there is always a lot going on in the community. [Gwinnett County Government](#) would appreciate your help keeping your neighbors informed by sharing the following information through your homeowner association newsletter, website, and emails and by talking to your friends and family. Click on *forward this email to a friend* below to share this newsletter!

Register to vote in the General election by October 9

The 2012 General Election will take place on Tuesday, November 6. The deadline to [register to vote](#) and be eligible to cast a ballot in the election is **Tuesday, October 9**. To register to vote in Georgia, you must be:

- A citizen of the United States
- A legal resident of Georgia and of the county in which you wish to vote
- At least 18 years old by Election Day



Those currently serving any sentence imposed by the conviction of a felony or judicially determined to be mentally incompetent are not eligible to register to vote.

Registered voters may [request an absentee ballot](#) by mail up to 180 days prior to any election; ballots will be mailed beginning September 21. Voters may cast their ballots in person from October 15 to November 2, Monday through Friday from 8:00am to 5:00pm at the Gwinnett County Elections Office, located at 455 Grayson Highway in Lawrenceville. Saturday voting will also be available at the elections office on October 27 from 9:00am to 4:00pm.

For the convenience of voters, [satellite offices](#) will be open October 27 from 9:00am to 4:00pm and October 29 - November 2 from 9:00am to 7:00pm at the Centerville Community Center in Snellville, George Pierce Park Community Recreation Center in Suwanee, Dacula Park Activity Building in Dacula, and Lucky Shoals Park Community Recreation Center in Norcross.

To view a consolidated ballot for the November 6 General Election, visit the [Sample Ballots Web page](#). For more information about voter registration and advance voting, visit www.gwinnettelelections.com.

2012 property tax bills due: October 15

