

BUSINESS, GOVERNMENT

Gwinnett Place CID Completes DDI Comment Period

Public input at open house to be submitted to state, local transportation agencies

By Faye Edmundson March 13, 2011

The Gwinnett Place Community Improvement District has completed the public comment period for improvements to the Interstate 85/Pleasant Hill Road interchange in Duluth. Reconstructing the interchange from a conventional diamond into a diverging-diamond configuration has been proposed to improve traffic flow. The diverging diamond (DDI) allows drivers to cross over to the opposite side of the road.

About 60 citizens turned out for a Feb. 24 informational open house on the project, according to Gwinnett Place CID Executive Director Joe Allen. The open house was hosted by the Gwinnett Place CID, the Georgia Department of Transportation and the Gwinnett County Department of Transportation. Representatives from the three entities presented designs and displays, answered questions and gathered public input.

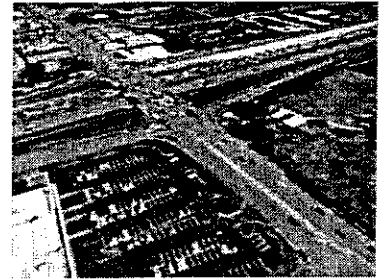
"We were very pleased with the level of input received during the public comment period and the attendance at the public information open house. We had positive interaction with area residents, business leaders, elected officials and chamber representatives regarding this transportation enhancement," said Allen. "Overall, the reaction to the I-85/Pleasant Hill Road DDI project was well received. As a CID, we see this bridge project not only as a way to immediately and significantly reduce traffic congestion in the area, but the project will serve as a visible symbol for the redevelopment and reemergence of Gwinnett's central business district."

An update on the project was presented at the Gwinnett Place CID Board of Directors meeting March 9 by Project Manager Erick Fry with URS Corp. Input gathered during the public comment period will be incorporated into comprehensive documentation submitted to state and local transportation departments for their review and approval.

Reconstruction of the Pleasant Hill Road bridge into a diverging-diamond interchange (DDI) is scheduled to start in early 2012 with completion in four months. A DDI is also proposed for I-85 and Jimmy Carter Boulevard.

For more information on the I-85/Pleasant Hill Road DDI project, click here (http://gwinnettplacecid.com/index.php?option=com_content&view=article&id=130&Itemid=66).

Play the video accompanying this story to see a simulated demonstration of cars using the diverging diamond at the I-85/Pleasant Hill Road interchange.



Interested in a follow-up to this article?



SEE NEXT IN BUSINESS

Black-Eyed Beauty Rescued by Duluth Makeup Artist >