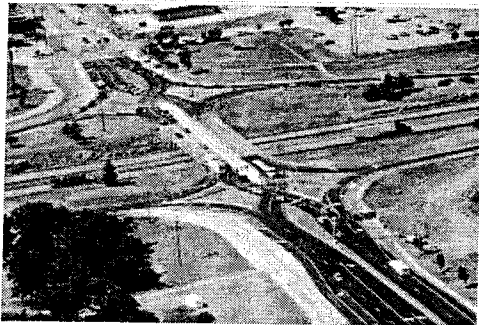


Written on August 9, 2010 at 12:05 pm by Bill Nash

# Diverging diamond interchange mulled for Pleasant Hill/I-85

Filed under [QCD](#)

[no comments](#)



By Camie Young  
Gwinnett Daily Post

DULUTH — For a way to clear congestion on two of Gwinnett's most clogged bridges, drivers may have to move to the wrong side of the road.

Community improvement districts for Gwinnett Place and Gwinnett Village are spearheading studies to create diverging diamond interchanges for Interstate 85 at Pleasant Hill Road and Jimmy Carter

Boulevard.

"This is out-of-the-box thinking," said Joe Allen, the executive director of the Gwinnett Place district, where area business owners banded together to tax themselves and form a quasi-governmental entity. "This is a brand new concept for the interstates in Georgia."

In fact, the idea, which began in Europe, is new to the United States. There is only one such interchange open so far, in Springfield, Mo. Allen, who visited the site with a junket of transportation and CID officials, said the community there is very similar to the Gwinnett Place area: a suburban business district with lots of traffic issues. And, he added, the interchange is working beautifully.

[Read More...](#)

Filed under [QCD](#)

[New builder gets quick start » »](#)

Sorry, the comment form is closed at this time.

## Mission Statement:

"Our mission is to achieve a higher standard of engineering services by providing unique solutions, minimizing construction costs, by consistently implementing quality control measures, maintaining rapid, direct communication"

## Need a Proposal? Contact

4168 Abbotts Bridge Road  
Suite 100

Duluth, GA 30097

[contact@qualitycivildesigns.com](mailto:contact@qualitycivildesigns.com)

678.577.9265

Connect to Bill Nash on LinkedIn

Connect to Nita Watson on LinkedIn

Connect to Aaron Frampton on LinkedIn

## Consulting Partners

Inland Surveying

Lawrence Design Group

Pate Design Group

## Gov't Resources

Barrow County Planning

City of Alpharetta

City of Buford

City of Conyers

City of Dacula

City of Gainesville

City of Johns Creek P&D

City of Milton

City of Sandy Springs

City of Snellville P&D

City of Sugar Hill P&D

City of Suwanee Planning

Cobb County

DeKalb County P&D

Forsyth County P&D

Fulton County

Gwinnett County P&D

Hall County P&Z

Henry County P&Z

## Twitter



By Twitter



RT  
Seth's  
<http://b...>  
23 hours

Learned  
about  
contract  
Thanks  
for the  
6 days ago

Finishing  
and about  
our plan  
submitted  
this in a  
bit.  
11 days ago

Join