

GWINNETT PLACE MALL

It's My Place!

2100 Pleasant Hill Road
 Duluth, GA 30096
 Latitude: 33.960288, Longitude: -84.126043
 702.968.2474
www.MoonbeamProperty.com



COME
 GROW
 WITH
 US.

- Gwinnett Place Mall is a 1.3 million square foot regional mall located in the southern portion of Gwinnett County, at the intersection of Pleasant Hill Road and I-85.
- The mall is anchored by Macy's, JCPenney, Sears and Mega Mart with over 9 million shoppers per year. Other retailers include Victoria's Secret, Bath & Body Works, Express, Express Men, and Abercrombie & Fitch.
- Rated as one of best malls by shoppers in *Best Of Gwinnett 2013*.
- With a daytime population of 237,101 people in a 5-Mile Radius. Gwinnett County has added 5.4 million square feet of office and industrial space each year for the past 13 years. Over 75% of these people are college-educated.
- Gwinnett Place Mall is in a major center of commerce, served by 78 hotels, with more than 10,000 rooms and an additional 500 rooms over the next two years.

| Demographics | 3 Miles | 5 Miles | 10 Miles |
|------------------------|----------|----------|----------|
| 2013 Population | 87,166 | 225,852 | 780,007 |
| 2013 Households | 31,566 | 76,943 | 267,019 |
| 2013 Average HH Income | \$61,144 | \$68,515 | \$86,922 |



MOONBEAM CAPITAL INVESTMENTS LLC
 NEW YORK ■ LAS VEGAS ■ ATLANTA

CONTACT:
MIRIAM SMITH-ROBINSON or KELLY COCHRAN
 phone: 702.968.2474
 e-mail: m.robinson@mlgpllc.com
k.cochran@mlgpllc.com
www.MoonbeamProperty.com

GWINNETT PLACE MALL

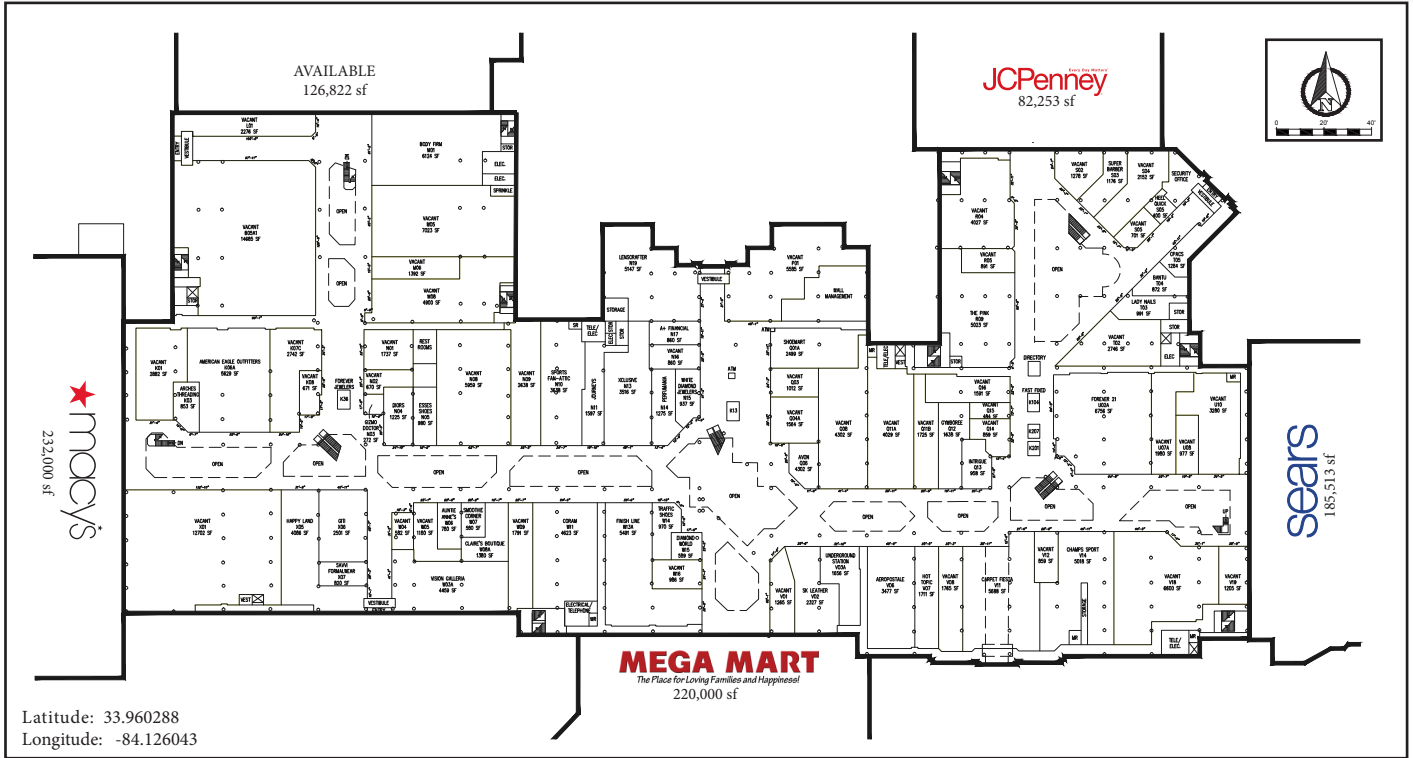
It's My Place!

2100 Pleasant Hill Road
Duluth, GA 30096

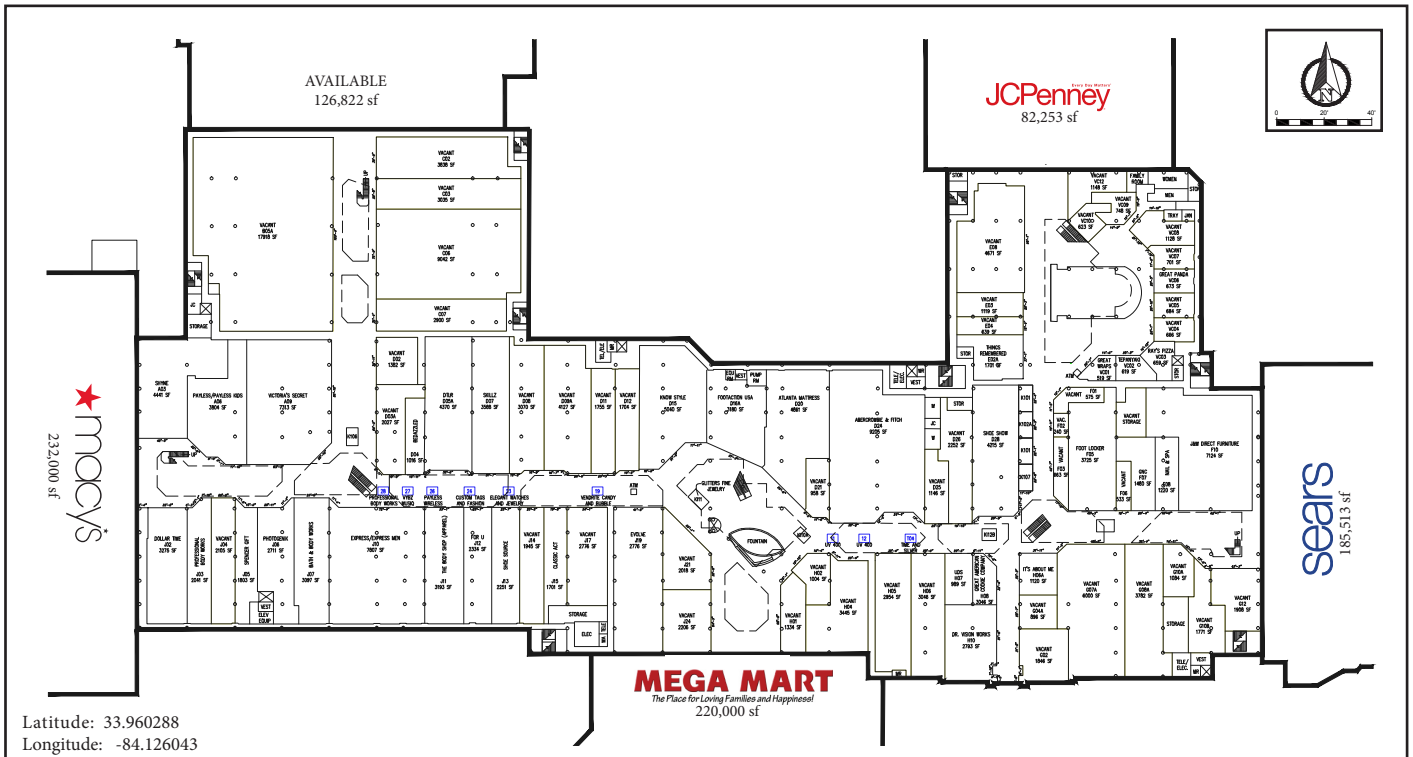
Latitude: 33.960288, Longitude: -84.126043
702.968.2474

www.MoonbeamProperty.com

UPPER LEVEL



LOWER LEVEL



CONTACT:

MIRIAM SMITH-ROBINSON or KELLY COCHRAN
phone: 702.968.2474

e-mail: m.robinson@mlgp LLC

k.cochran@mlgp LLC

www.MoonbeamProperty.com

MOONBEAM CAPITAL
INVESTMENTS LLC

NEW YORK ■ LAS VEGAS ■ ATLANTA